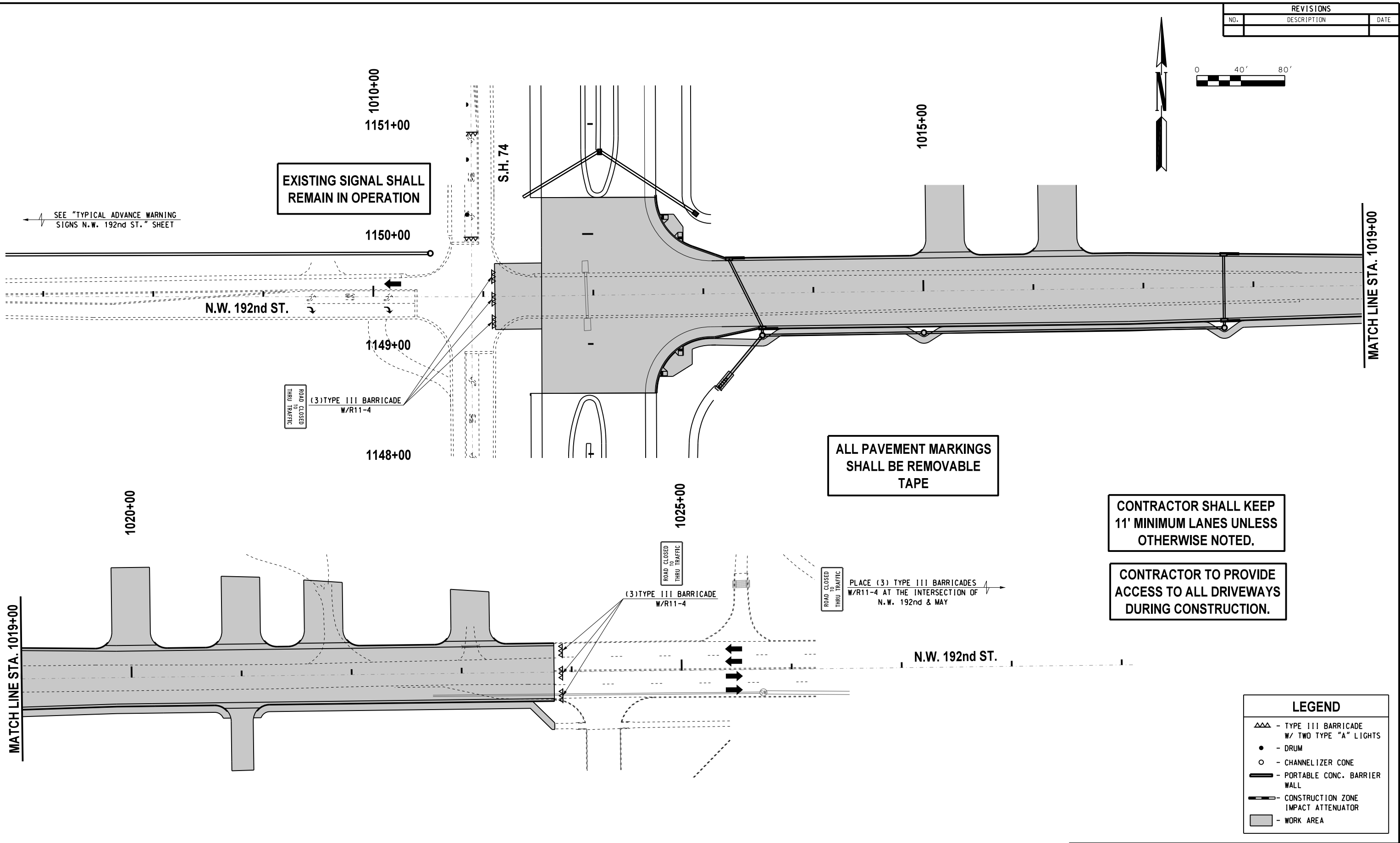
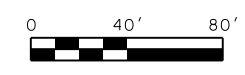


REVISIONS		
NO.	DESCRIPTION	DATE



SEE "TYPICAL ADVANCE WARNING SIGNS N.W. 192nd ST." SHEET

EXISTING SIGNAL SHALL REMAIN IN OPERATION

ALL PAVEMENT MARKINGS SHALL BE REMOVABLE TAPE

CONTRACTOR SHALL KEEP 11' MINIMUM LANES UNLESS OTHERWISE NOTED.

CONTRACTOR TO PROVIDE ACCESS TO ALL DRIVEWAYS DURING CONSTRUCTION.

LEGEND	
△△	- TYPE III BARRICADE W/ TWO TYPE "A" LIGHTS
●	- DRUM
○	- CHANNELIZER CONE
▬	- PORTABLE CONC. BARRIER WALL
▬	- CONSTRUCTION ZONE IMPACT ATTENUATOR
■	- WORK AREA

Design	RWR	08/10/17
Drawn	GDB	08/10/17



TRAFFIC CONTROL PHASES 2B,C & D N.W. 192nd ST.

State Job No. 14964(08) Sheet No. 146

08/10/17 G:\Projects\T-1662B SH 74 @ NW 178th, NW 192nd & NW 206th\CAD\TC PHASE 2B,C,D,NW 192ND.dgn